

USB cable User Installation Manual

For Windows vista

(11/2009)

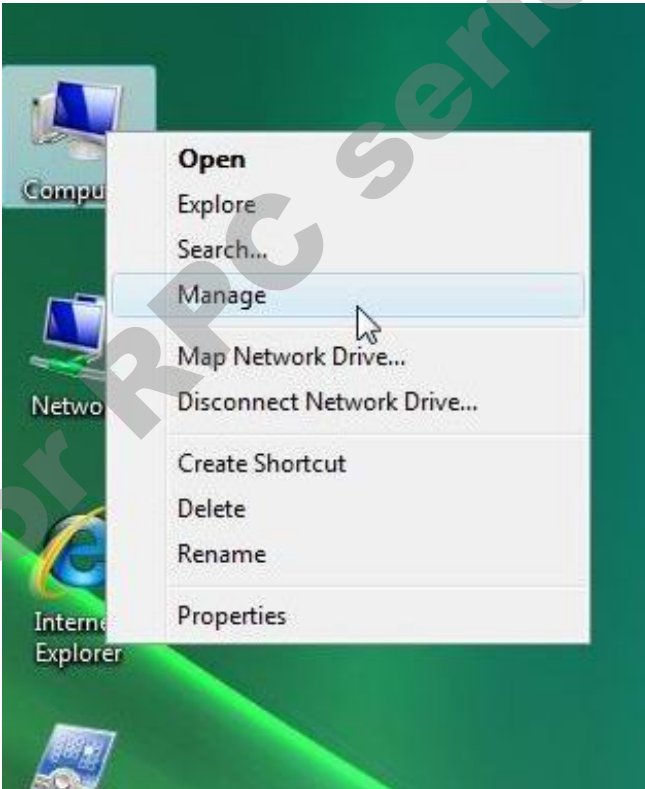
1. Power on your computer and boot to Windows.
2. Locate the USB port of your computer and plug in the USB cable.

Windows will detect the new device and will initiate the Found New Hardware Wizard prompting you to install the software for the detected USB Device.

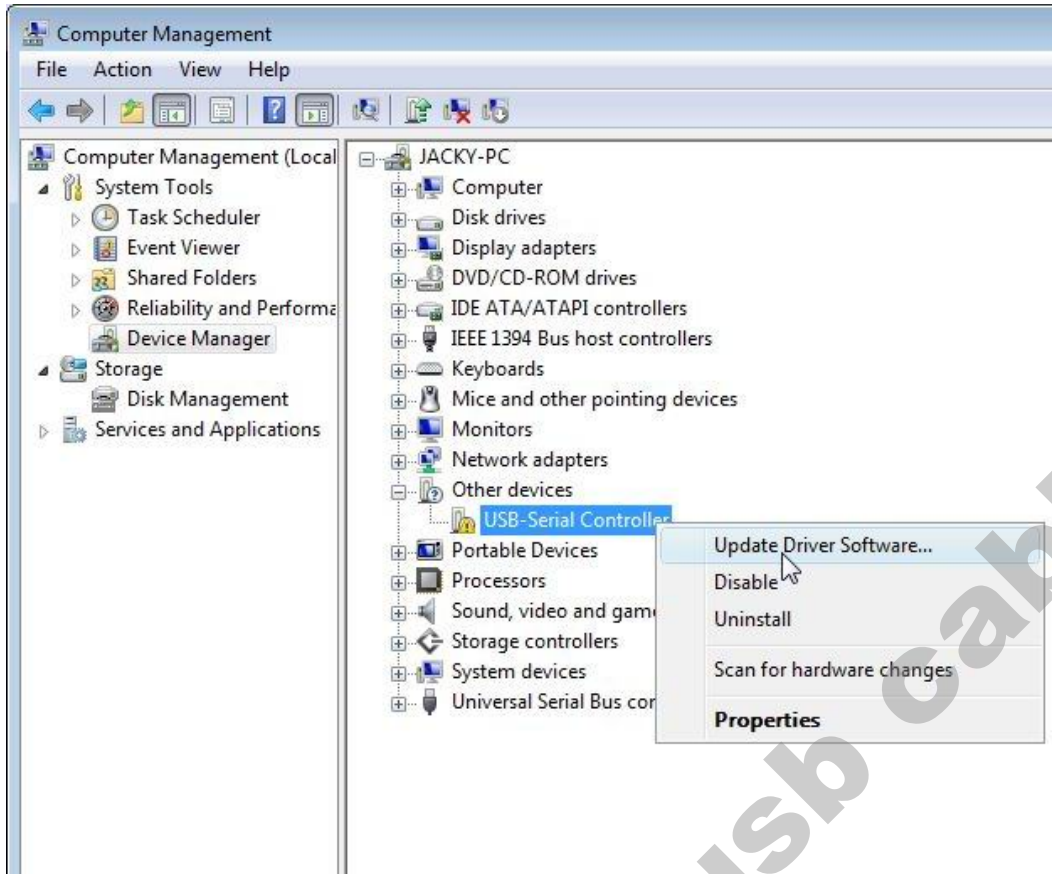
3. Click **Cancel** to continue.



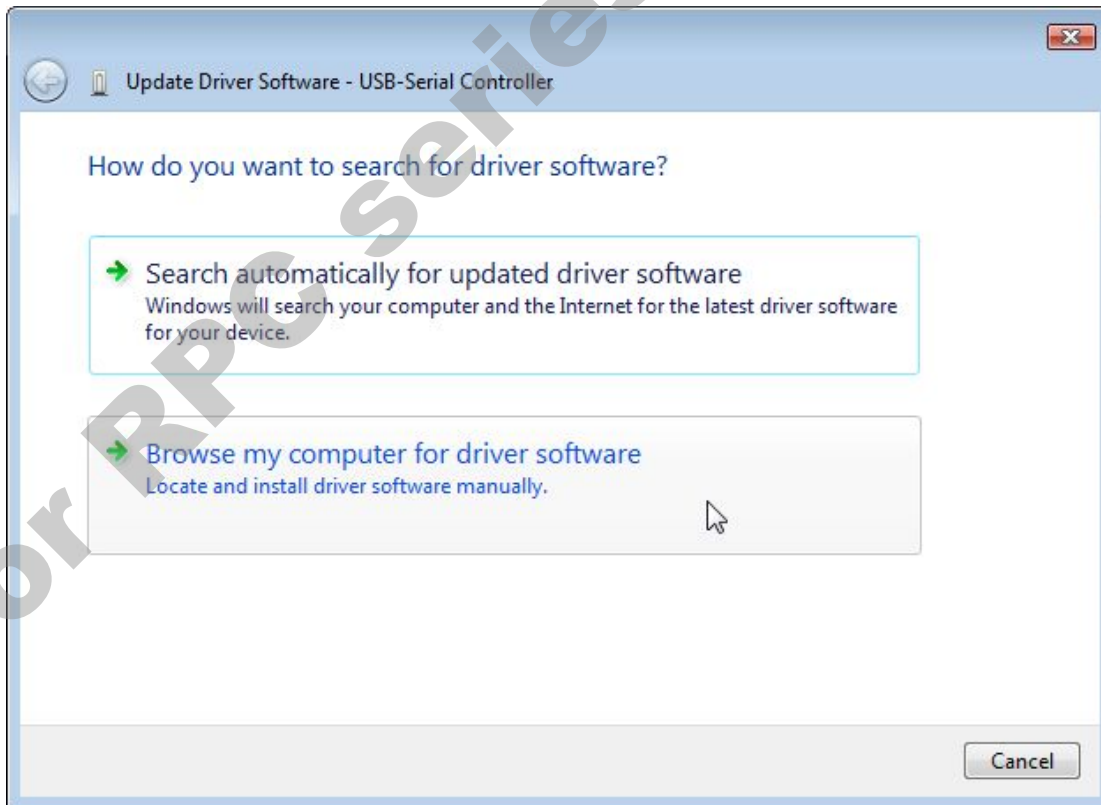
4. right click computer→select **Manage**



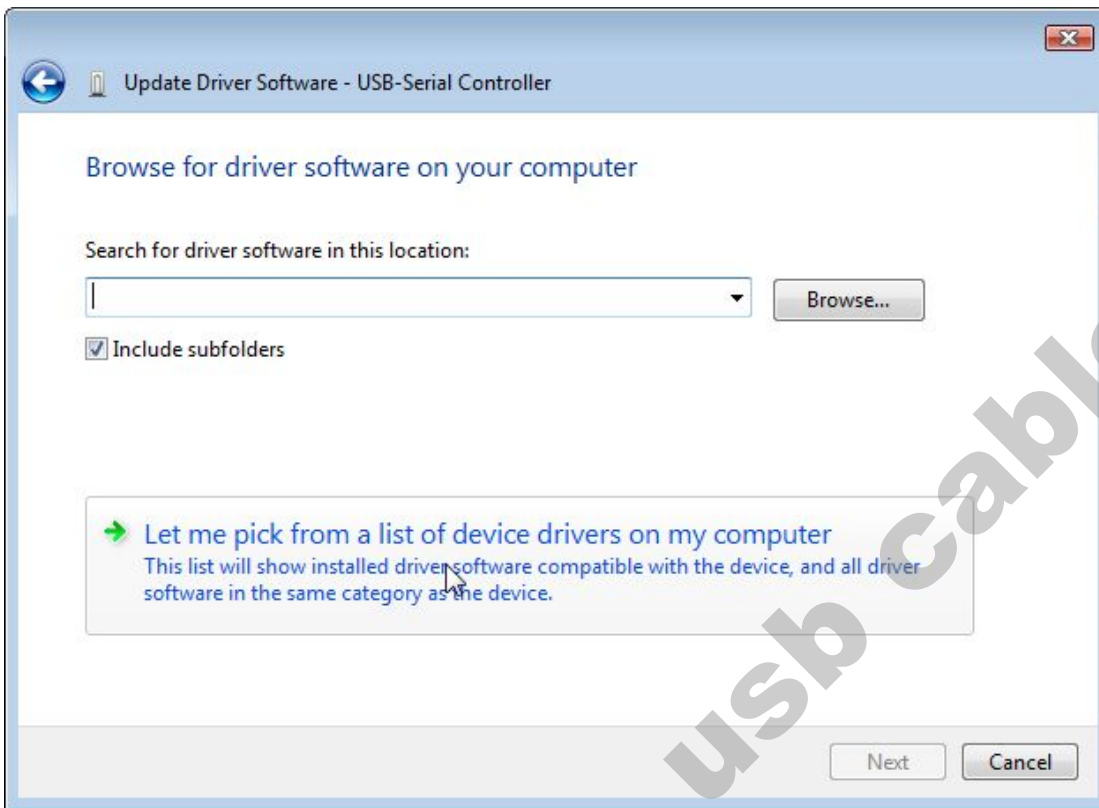
5. Computer Management→Device Manager→right click USB–Serial controller→Update Driver Software



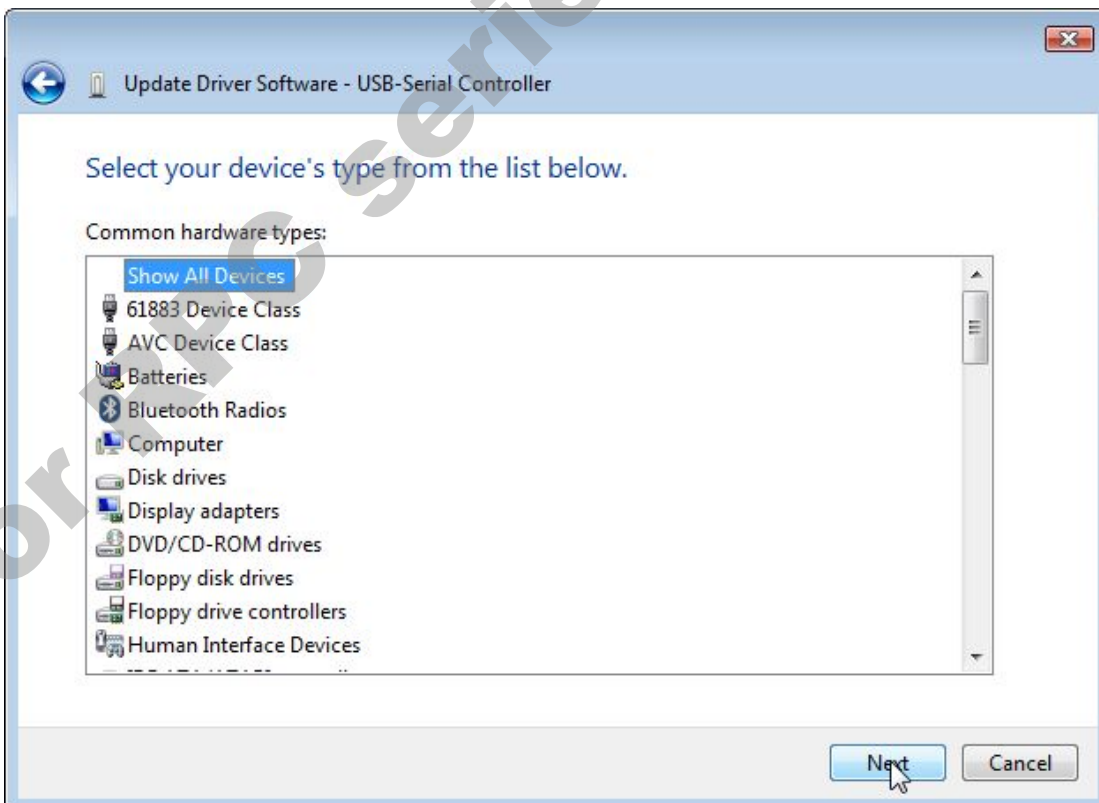
6. select Browse my computer for driver software



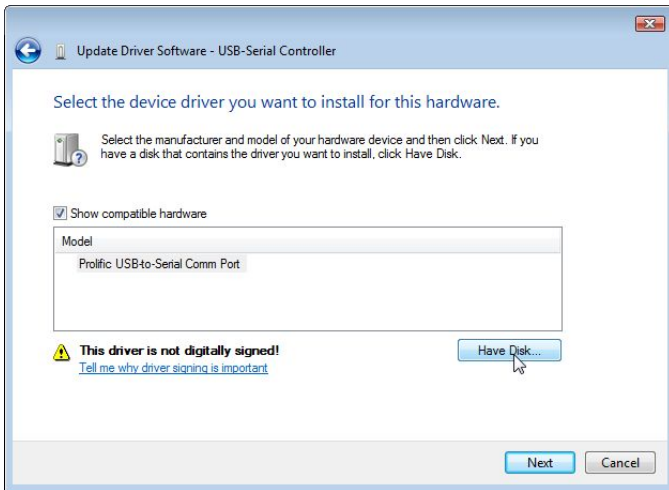
7. select **Let me pick from a list of device drivers on my computer**



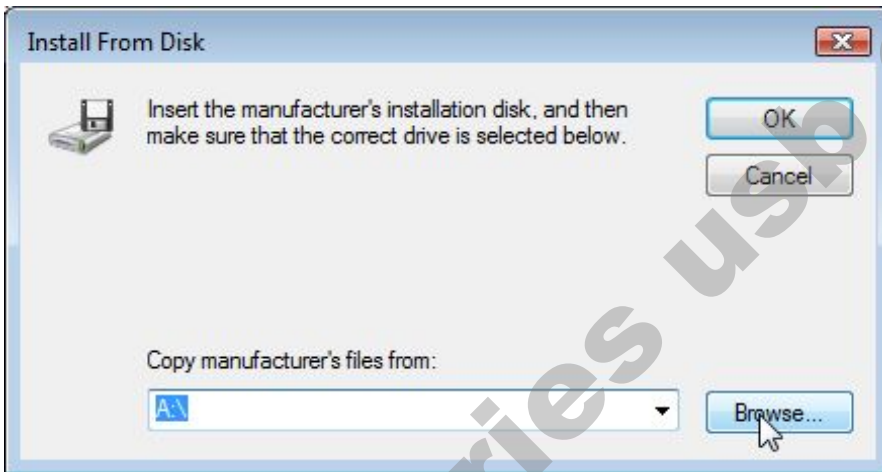
8. click **Next** to continue



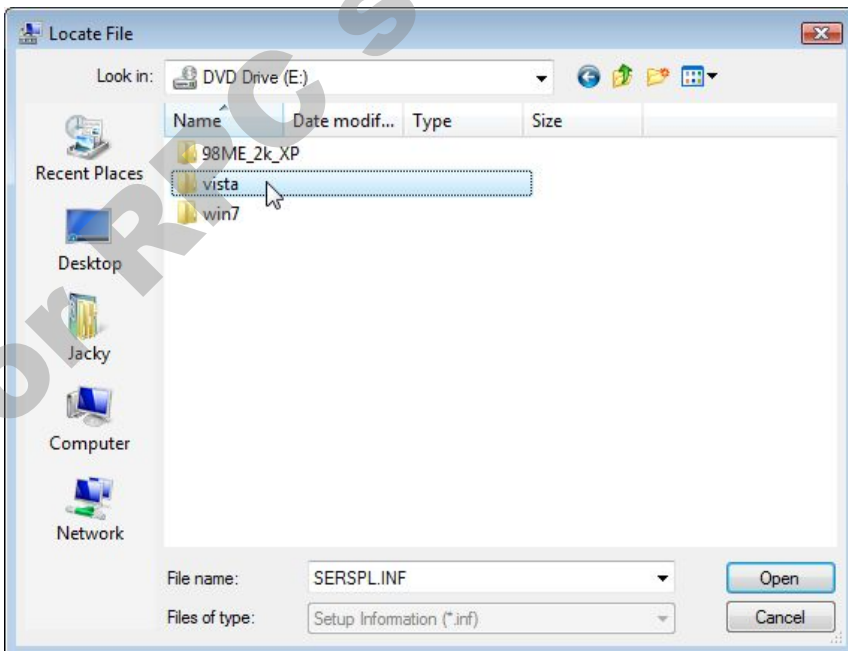
9.click Have Disk...



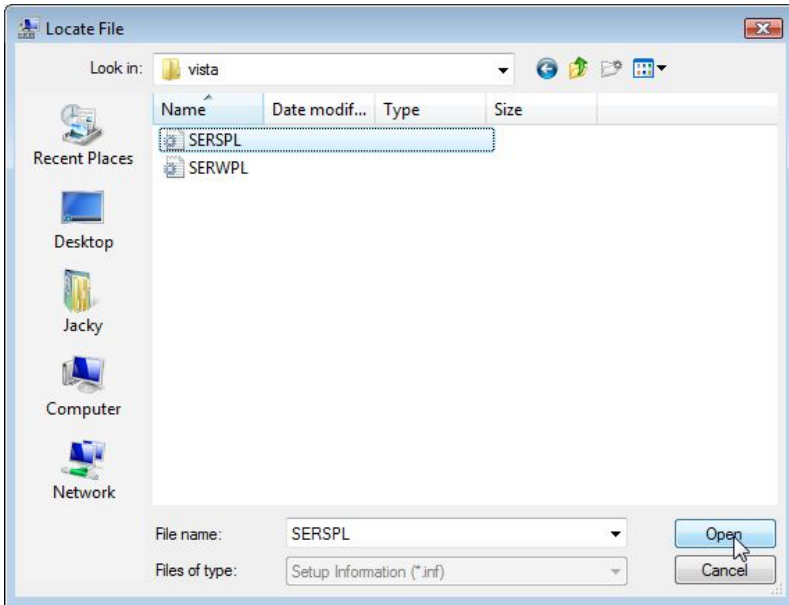
10.click Browse



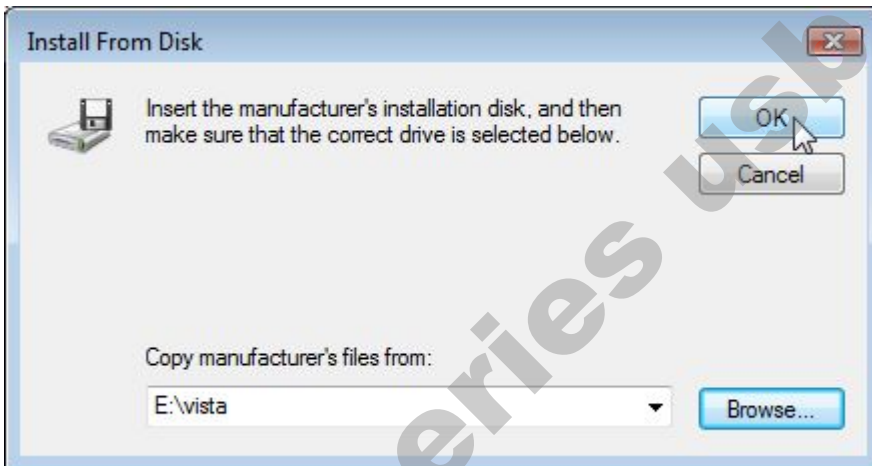
11.click vista



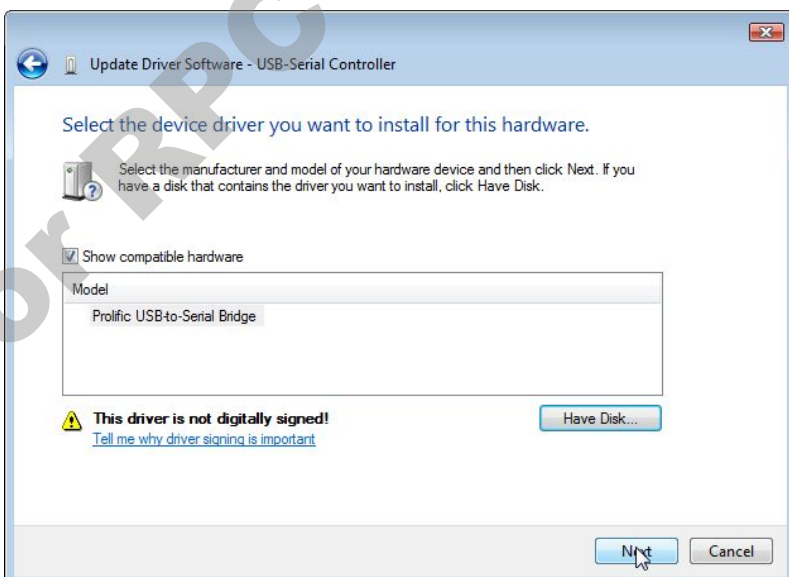
12 select "serspl"



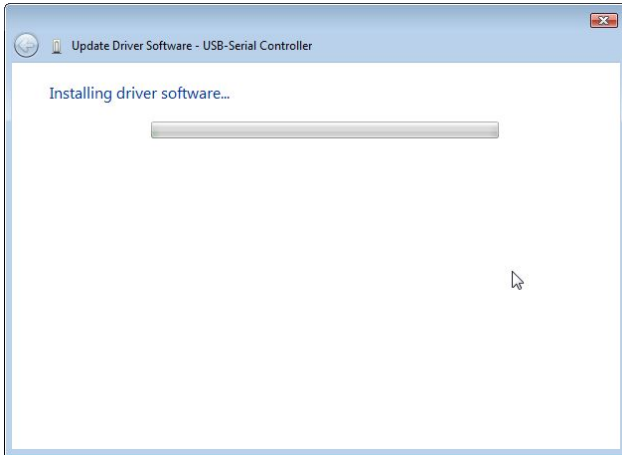
13. click ok to continue



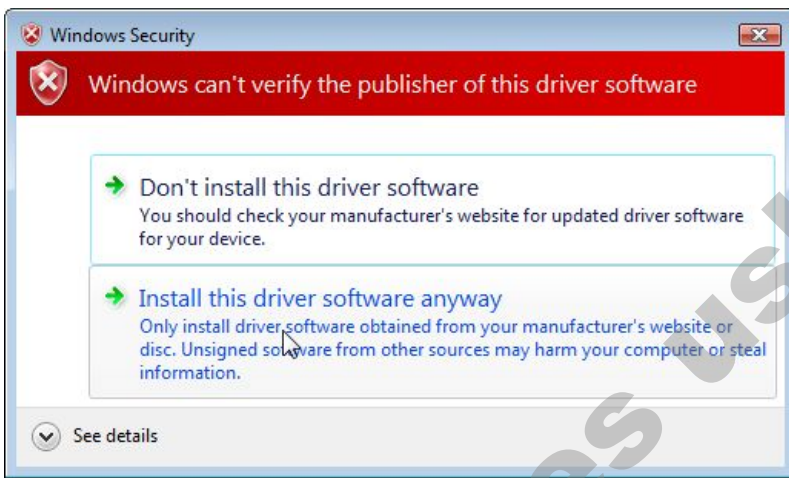
14. click Next to continue



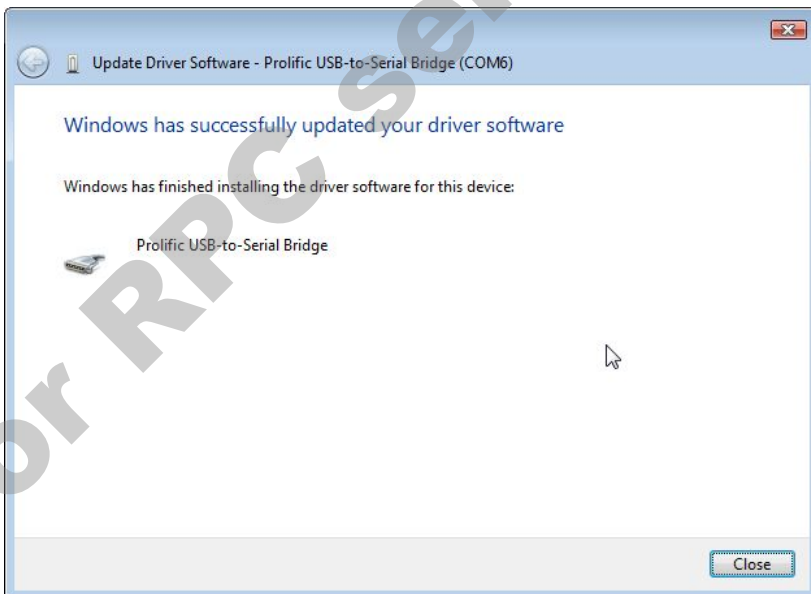
15. installing...



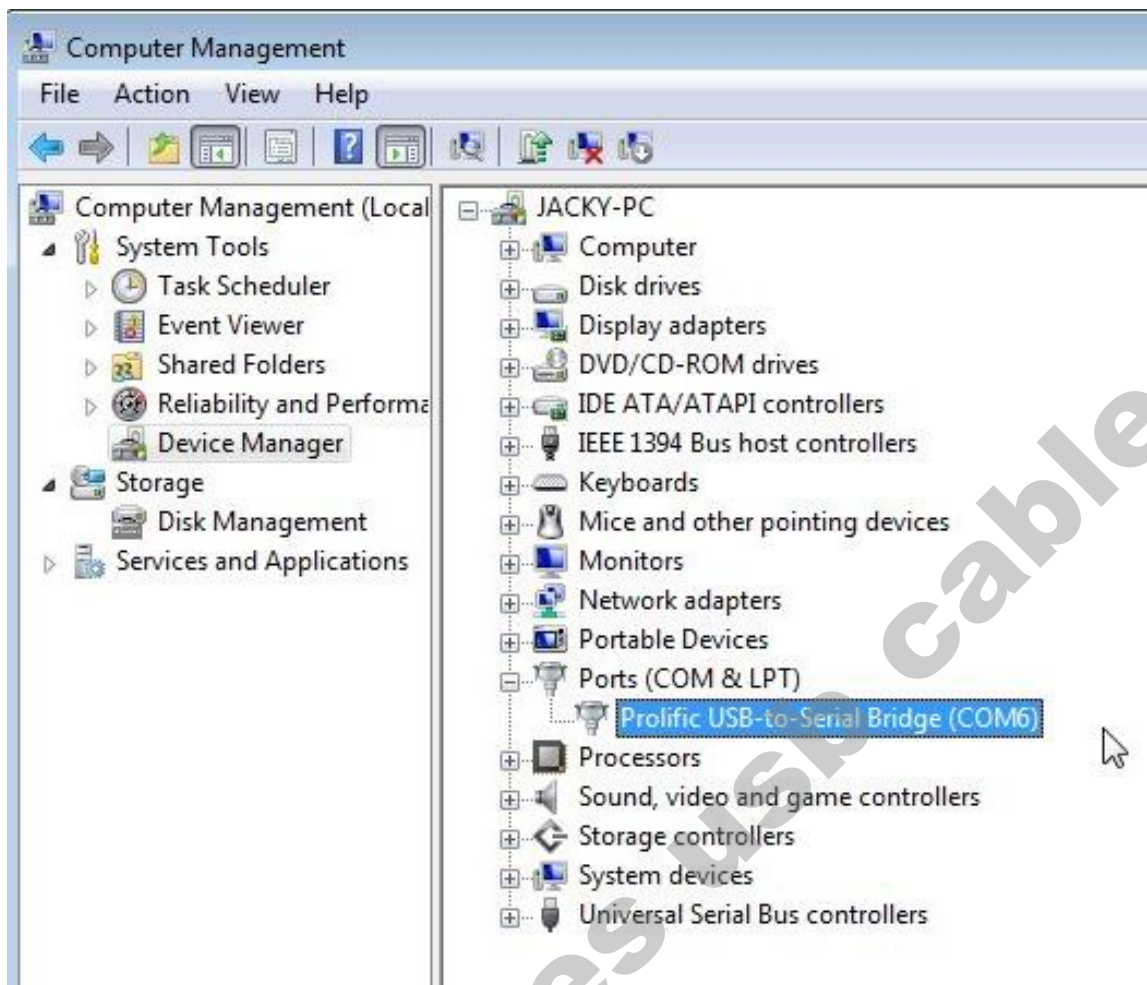
16. select Install this driver software anyway



17. install successfully



18. Verifying the Installation



You should see the Prolific USB-to-Serial Comm Port (COM *) device listing. This also means that Windows has assigned the device to COM * port.